

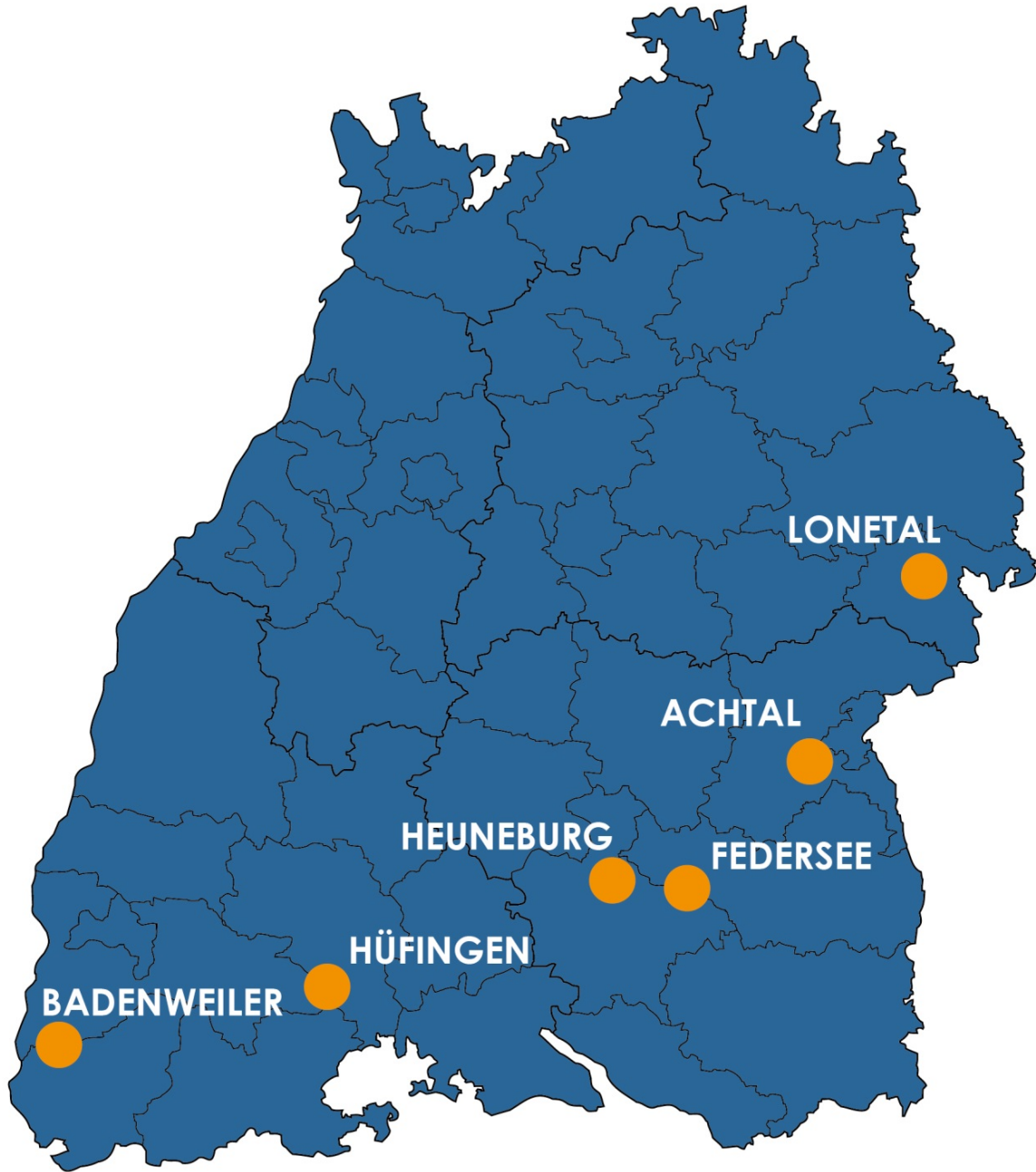
eac - 20th Annual Meeting

**Taking care of major archaeological sites and
monuments in Baden-Württemberg.
Some examples from Germany**



Prof. Dr. Dirk Krause

Landesamt für Denkmalpflege Baden-Württemberg, Germany



**Federal State of
Baden-Württemberg:**

35.751 km²

11 Mio. inhabitants

Who owns archaeological sites and monuments?

F.R.G.

World War 2

Cold War

Military

Federal State

Castles + Gardens

State Forests

Agricultural Estates

Communities

+

Municipalities

Private

resp.

NPOs/NGOs

Who takes care?

Ministry of Economics
State Service for Cultural Heritage

Consultation + Controll

F.R.G.

World War 2

Cold War

Military

Federal State

Castles + Gardens

State Forests

Agricultural Estates

Consultation + Controll + Support

Communities

+

Municipalities

Private

resp.

NGOs

Who takes care ?

Ministry of Economics
State Service for Cultural Heritage

Consultation + Controll

Consultation + Controll + Support

F.R.G.

World War 2

Cold War

Military

Federal State

Ministry of Finance

Ministry of Agriculture

Communities

+

Municipalities

Private

resp.

NGOs

State Castle
and Garden
Services (SSG)

Estate
Management
Service

State Forests
Services

Who takes care ?

Ministry of Economics
State Service for Cultural Heritage

Consultation + Controll

Consultation + Controll + Support

F.R.G.

World War 2

Cold War

Military

Federal State

Ministry of Finance

Ministry of Agriculture

Communities
+

Municipalities

Private

resp.

NGOs

State Castle
and Garden
Services (SSG)

Estate
Management
Service

State Forests
Services

Roman bath of Badenweiler



Roman bath of Hüfingen



The Odyssey of the Heuneburg



"That river flows from the land of the Celtae and the city of Pyrene through the very midst of Europe., *Herodotos, 2,33,3*

Who takes care?

Ministry of Economics
State Service for Cultural Heritage

Consultation + Control

Consultation + Control

Consultation + Control

F.R.G.

World War 2

Cold War

Military

Federal State

Ministry of Finance

Ministry of Agriculture

Communities
+

Municipalities

Private

resp.

NGOs

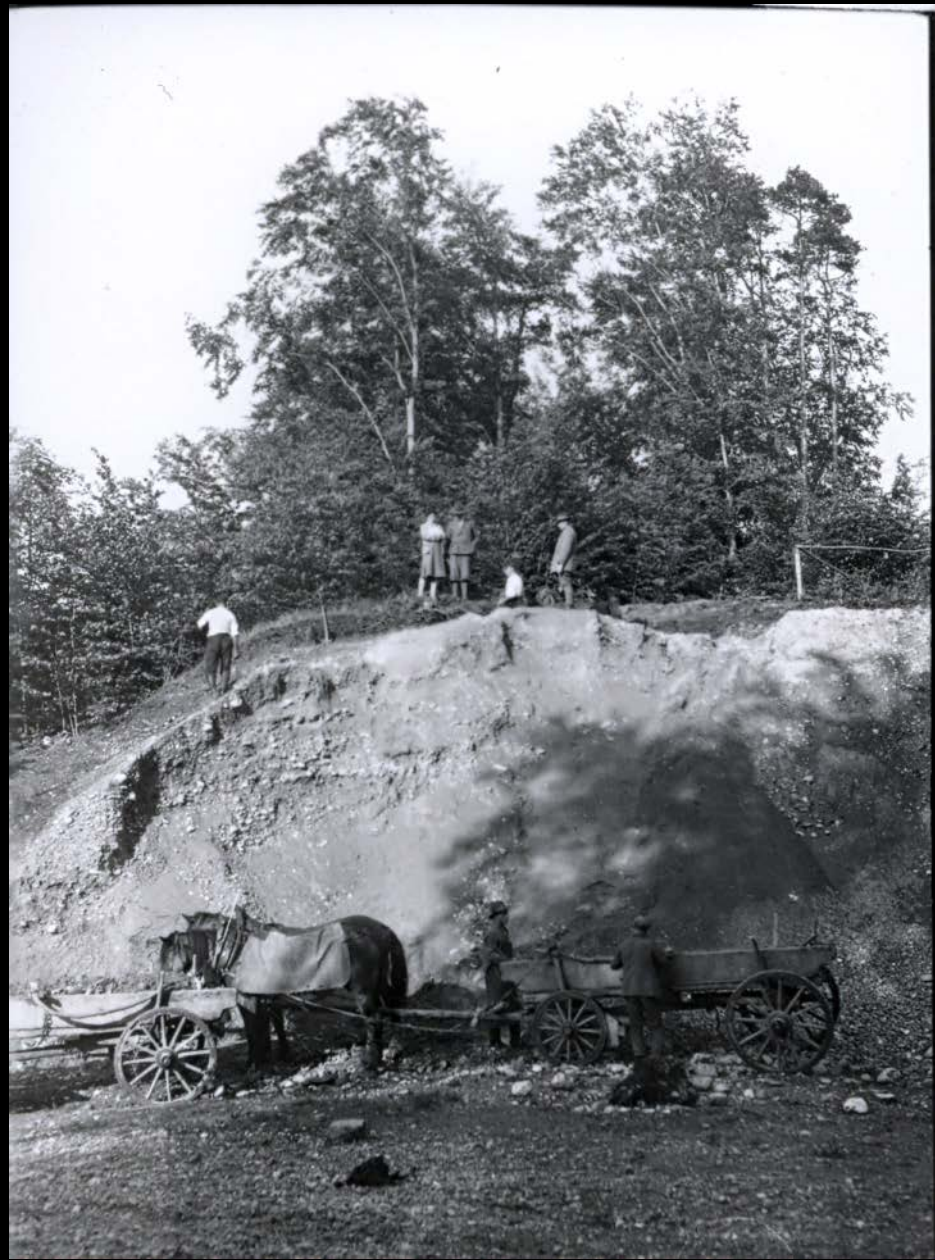
State Castle
and Garden
Service (SSG)

Estate
Management
Service

State Forests
Services



Heuneburg:
Intensive
agricultural use until
the 1990ies



Heuneburg: Excavations University Tübingen 1950-1979





Heuneburg: Open Air Museum since 2000

Who takes care?

Ministry of Economics
State Service for Cultural Heritage

Consultation + Controll

Consultation + Controll

Consultation + Controll

F.R.G.

World War 2
Cold War
Military

Federal State

Ministry of Finance
Ministry of Agriculture

**Communities
+
Municipalities**

Private

resp.

NGOs

State Castle
and Garden
Service (SSG)

**Estate
Management
Service**

State Forests
Services

Contract

Heuneburg Open Air Museum:

2000-2012

Organized by local community

Who takes care ?

Ministry of Economics
State Service for Cultural Heritage

Consultation + Controll

Consultation + Controll

Consultation + Controll

support

F.R.G.

World War 2

Cold War

Military

Federal State

Ministry of Finance

Ministry of Agriculture

**Communities
+
Municipalities**

Private

resp.

NPO/NGOs

Contract and support

State Castle
and Garden
Service (SSG)

Estate
Management
Service

State Forests
Services

Heuneburg Open Air Museum:

Since 2014

Organized by Gesellschaft für
Archäologie (NPO)



Scientific research and excavations:

2004-2010 Priority Program „Early Urbanization and Centralization North of the Alps“ (DFG)

2010-2014 Excavation of the Bettelbühl Princely Grave

2014-2026 Longterm Program Heuneburg and Surroundings (DFG)

Exhibitions:

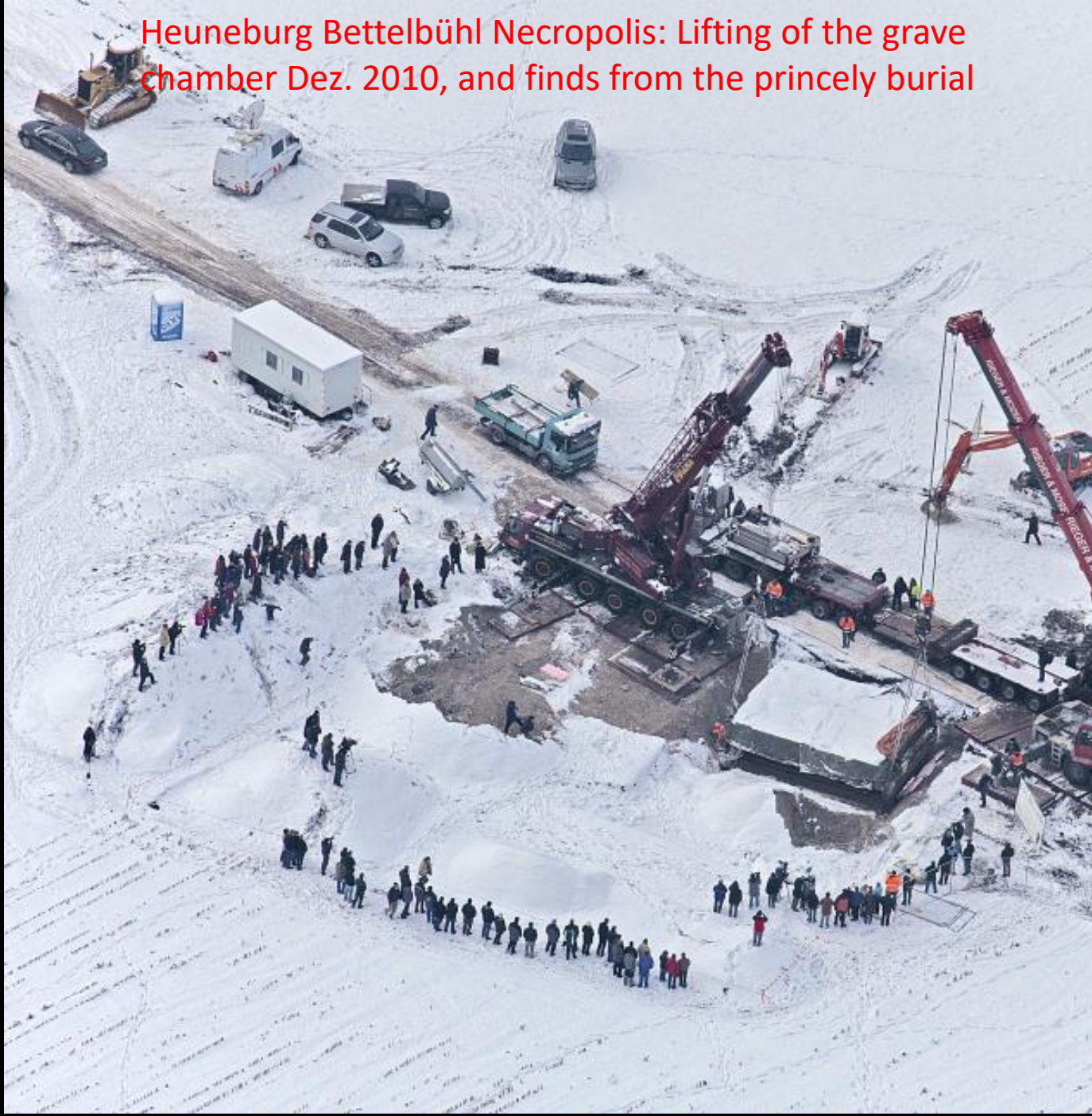
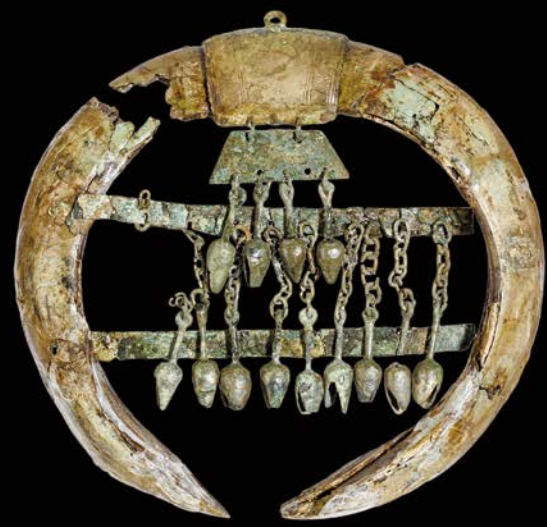
2012-2013 Die Welt der Kelten. Zentren der Macht – Kostbarkeiten der Kunst (Stuttgart; 185.000 visitors)

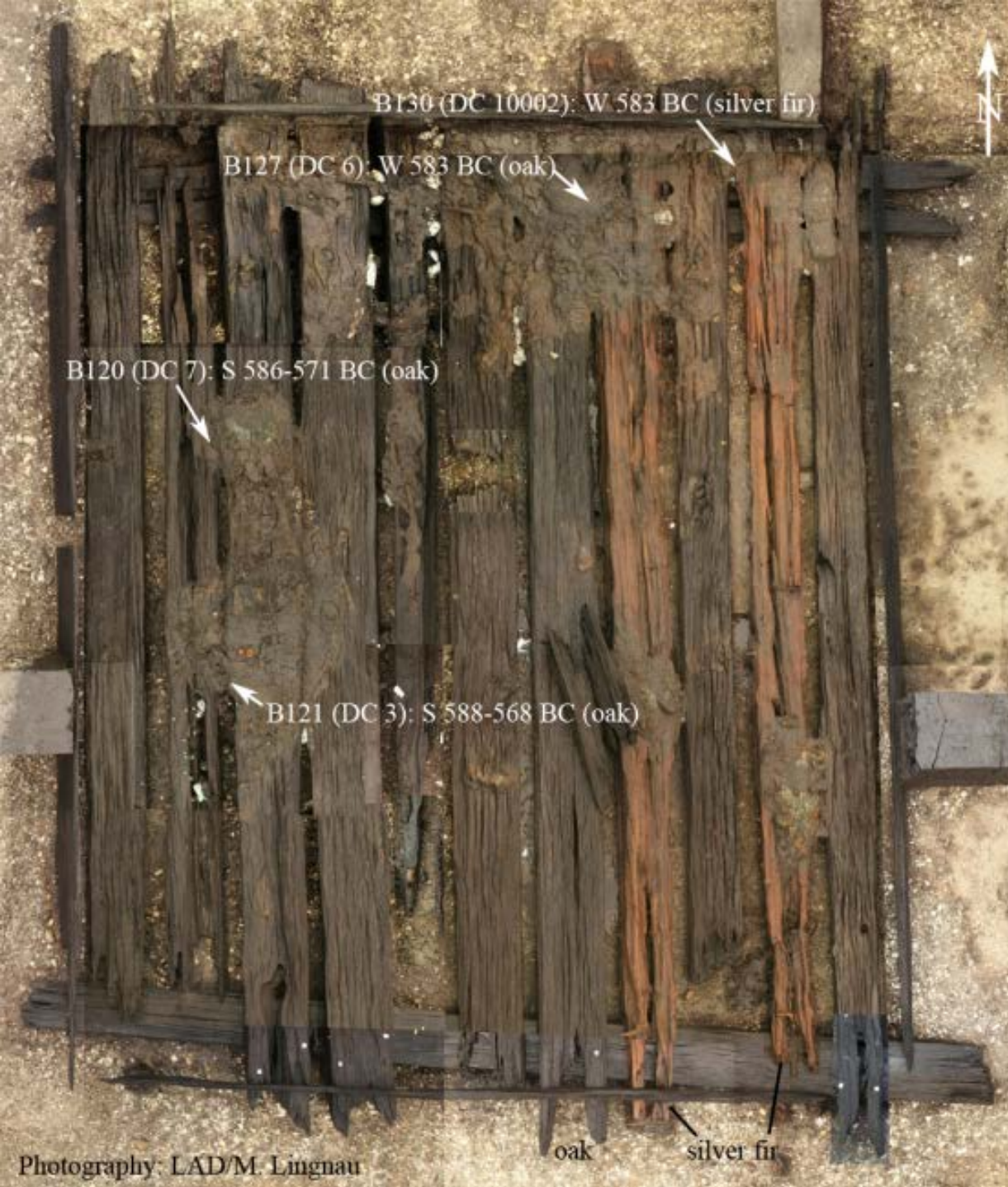
2014-2019 Das Geheimnis der Keltenfürstin (Herbertingen, Stuttgart, Glauberg, Villingen-Schwenningen etc.; 80.000 visitors)

Heuneburg Bettelbühl Necropolis: Lifting of the grave chamber Dez. 2010, and finds from the princely burial

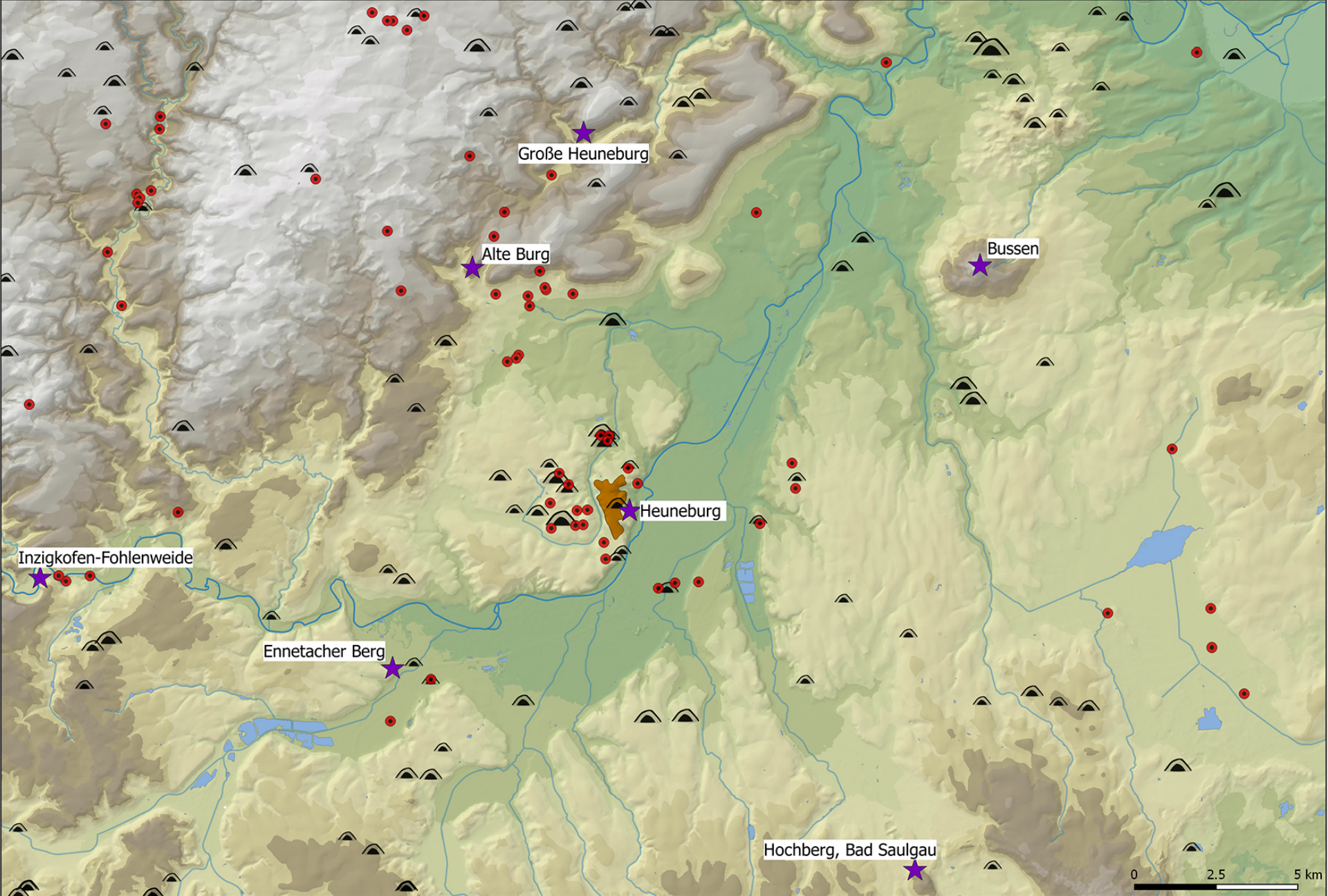


b



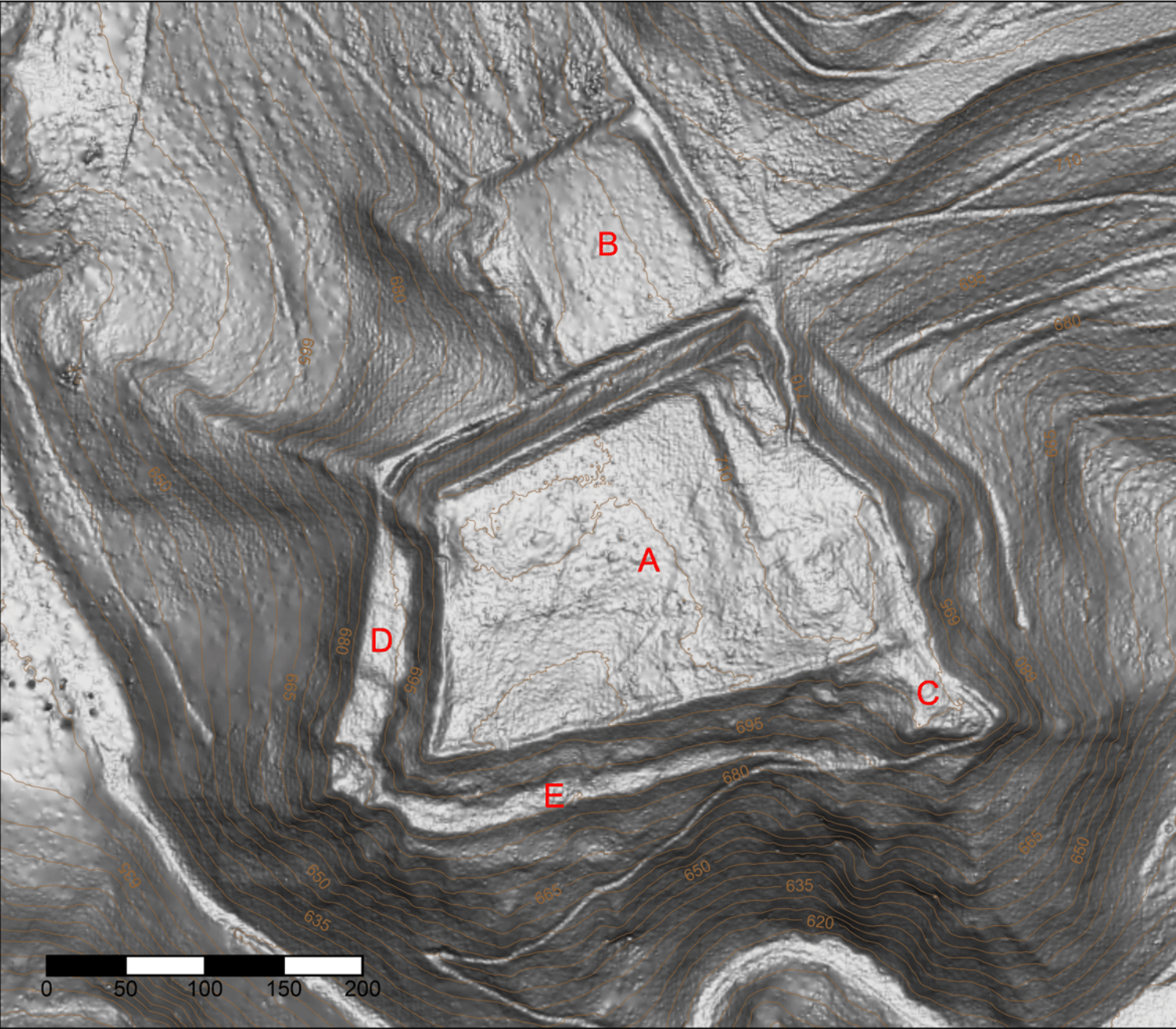


Heuneburg Bettelbühl: Timbers of the central burial chamber, with dendrodates Date 583 BC



★ Höhensiedlung
● Siedlung

⌒ Grabhügel (Symbolgröße zeigt Anzahl an)
■ Heuneburg Außensiedlung

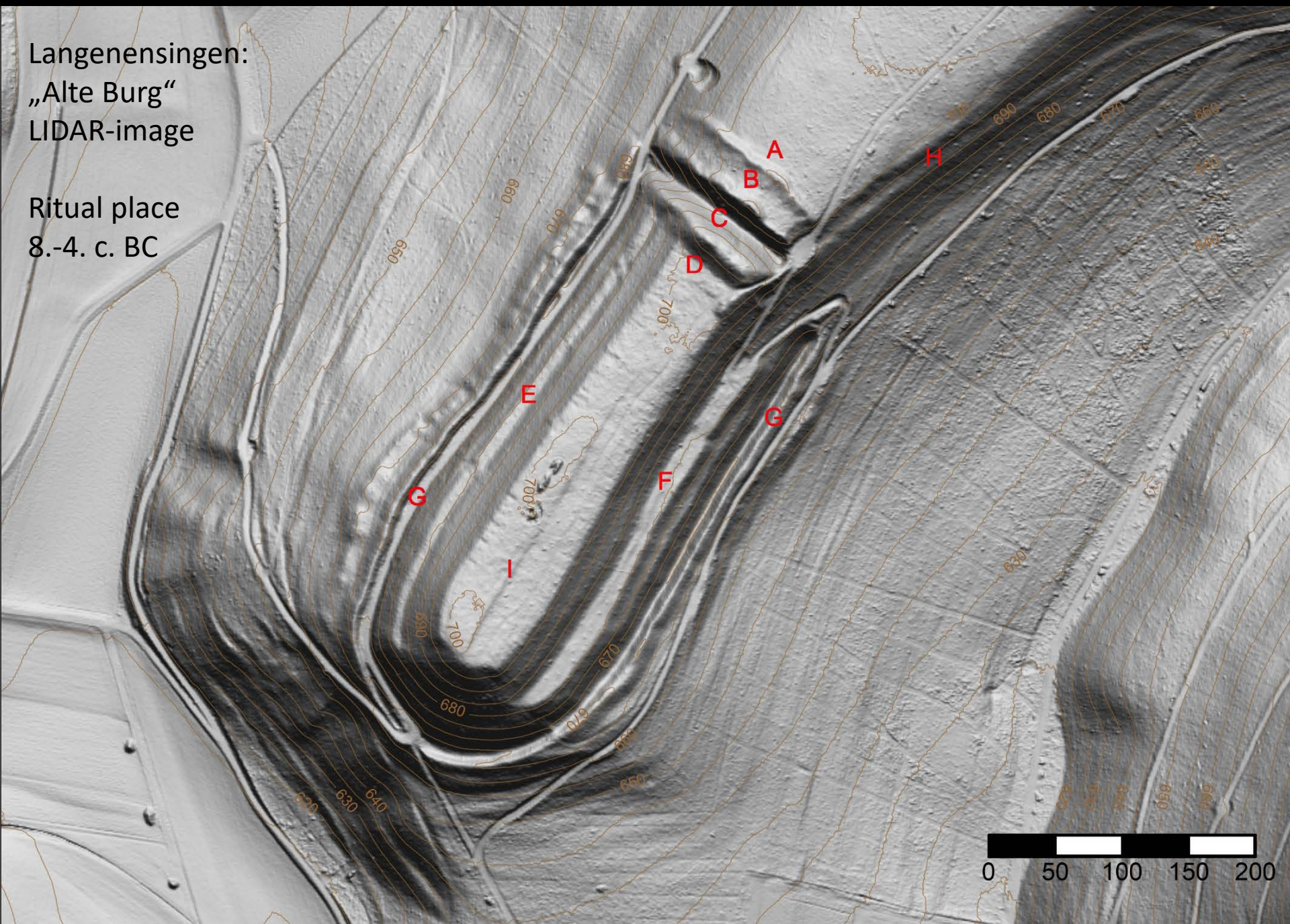


Zwiefalten-
Upflamör:
„Große
Heuneburg“
LIDAR-image

Fortification
8.-6. c. BC

Langenensingen:
„Alte Burg“
LIDAR-image

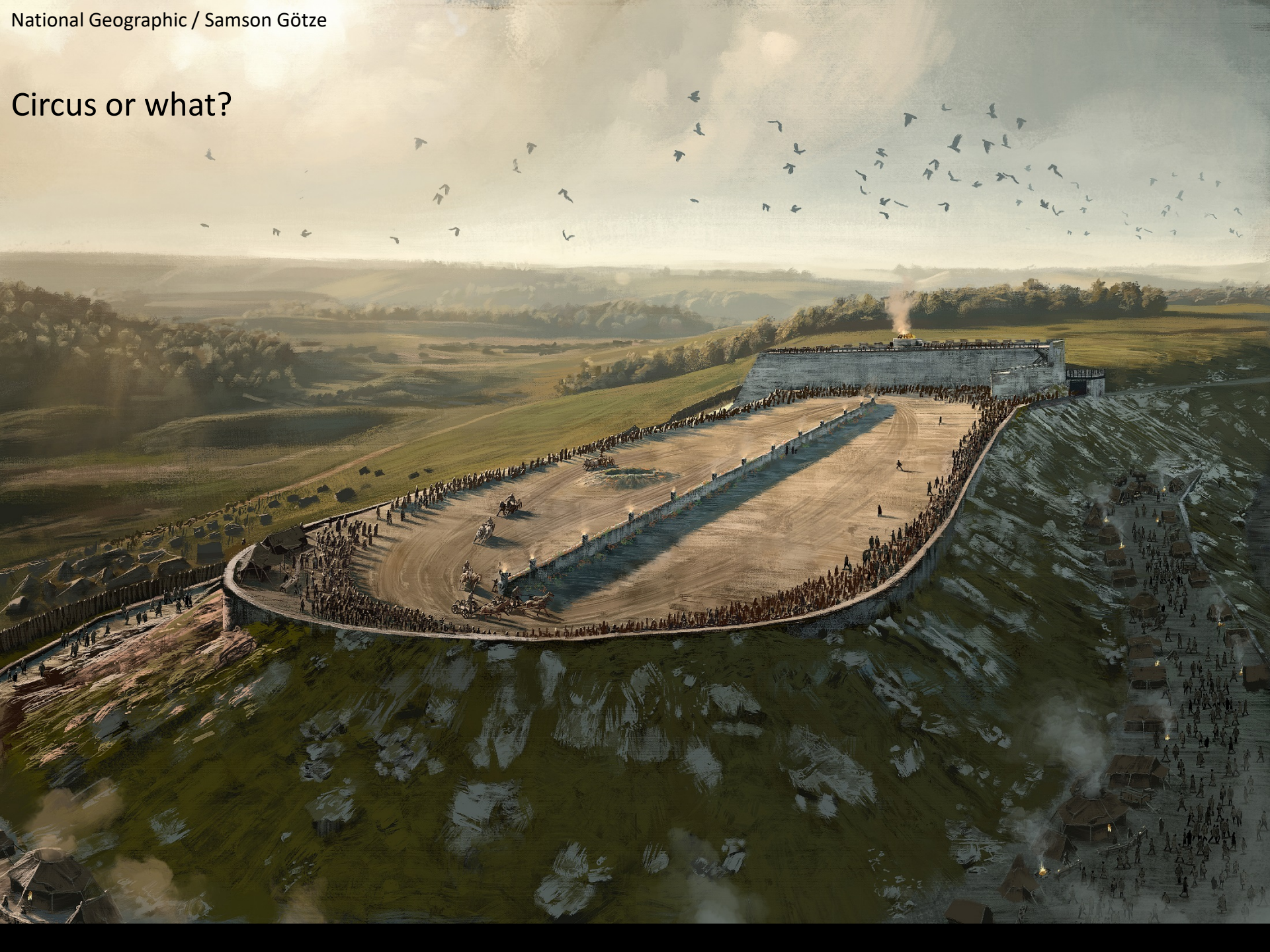
Ritual place
8.-4. c. BC







Circus or what?



Who takes care ?

Ministry of Economics
State Service for Cultural Heritage

Consultation + Control

Consultation + Control

support

F.R.G.

World War 2

Cold War

Military

Coorganisation and support

Federal State

Ministry of Finance

Ministry of Agriculture

**Communities
+
Municipalities**

Private

resp.

NPO/NGOs

**State Castle
and Garden
Services (SSG)**

Estate
Management
Service

State Forests
Services

Heuneburg Archaeological Park:

from 2020 on

Organized by State Castles and Gardens

Who takes care ?

Ministry of Economics
State Service for Cultural Heritage

Consultation + Control

Consultation + Control

support

F.R.G.

World War 2

Cold War

Military

Federal State

Ministry of Finance

Ministry of Agriculture

Communities

+

Municipalities

Private

resp.

NPO/NGOs

State Castle
and Garden
Services (SSG)

Estate
Management
Service

State Forests
Services

World Heritage Sites:

Roman Limes

Pile Dwellings

Caves and Ice Age Art